

TISSUES

1. What is the definition of tissue?

A grouping of specialized cells.

2. What are the four main types of tissue in animals?

Connective Tissue, Epithelial Tissue, Muscle Tissue, and Nervous Tissue

3. What are the general functions of each of the four main types of tissue in animals?

Connective Tissue – Support and connect parts of the body

Epithelial Tissue – Protect and cover parts of the body (outside and inside)

Muscle Tissue – Moves parts of the body

Nervous Tissue – Carries signals between the brain and parts of the body

4. How many types of muscle tissue can be found in a human? Name them.

Soft Muscle Tissue – Found in organs (not the heart)

Skeletal Muscle Tissue – Attached to bones

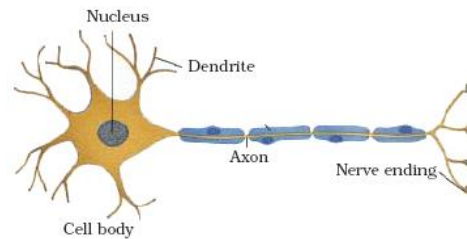
Cardiac Muscle Tissue – Found in the heart

5. Name two examples of connective tissue that begin with the letter “B”.

Blood and Bone

6. Which type of tissue contains cells with parts named “dendrites” and “axons”? Include a labelled image.

Nervous Tissue



7. What are the three main types of tissue in plants?

Dermal Tissue, Ground Tissue, and Vascular Tissue

8. What are the general functions of each of the three main types of tissue in plants?

Dermal Tissue – Protect the plant and prevent water loss

Ground Tissue – Photosynthesis and nutrient storage

Vascular Tissue – Transportation of materials

9. What are the two main sections of vascular tissue?

Xylem – Transports water from the roots to the rest of the plant

Phloem – Transports sucrose from the leaves to the rest of the plant

10. In what type of tissue would you find a “stomata”? What is its purpose?

Dermal Tissue. Stomata are openings in the outer layer of a plant, it allows for gas exchange and release of waste.