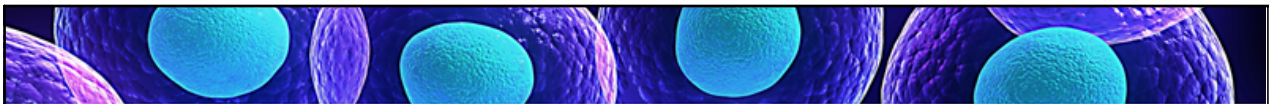


Grade 8 Science

Unit 2: Cells



Human Cheek Cells

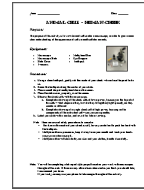
Earlier you looked at plant cells, onion skin, under the microscope. Today you will look at animal cells. We will be observing your own cells, taken from the inside of your cheek.

I will not be handing out a work sheet today, but I have placed instruction sheets at the back with the supplies. Please make sure to read through all of the instructions carefully before you start preparing your samples.

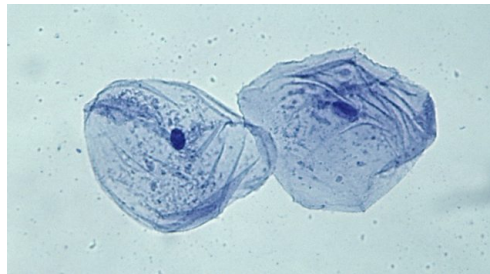
Your task for today is the same as it was for the onion skin, the only real difference being that this time you will work in pairs. You each need to produce a drawing of cells at low magnification, looking at how the cells are arranged, and a drawing at high magnification, detailing a single cell.

Human Cheek Cells

1. Read activity sheet
2. Prep cheek cell wet-mount
3. Draw a group of cells at low magnification
4. Draw a single cell at high magnification



Here is an example of some typical animal cells - just so you have an idea of what you are looking for.



Homework
on next
page.

Human Cheek Cells

For homework, due _____, please answer the following questions:

1. Based on what **we have learned**, what differences are there between plant and animal cells?
2. Based on **your observations** (onion vs cheek), what differences have you noticed between plant and animal cells?
3. Why do you think these differences (the ones you mentioned in questions 1 and 2) exist?

I have assigned this on your Google Classroom.

Please bring your phone, again, next class.

Attachments

2-10 Cheek Cells.pdf