



Grade 7 Science

Unit 2: Ecosystems



Graphing

If you did not do so when it was due, please submit your graph into the bucket now.

I have put an example Predator/Prey graph on the wall. Take a good look at it, and then follow the following steps:

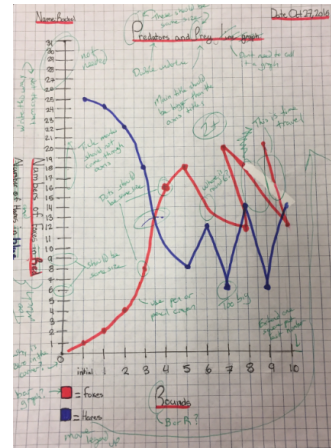
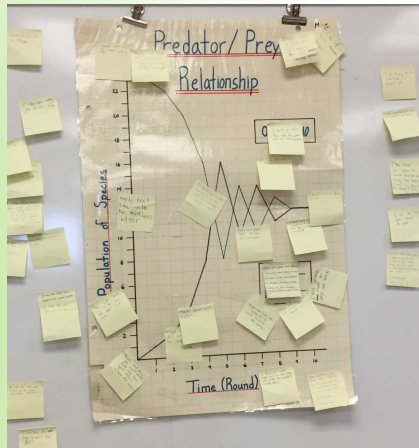
- 1) Look for something you feel is done well on the graph
- 2) Take a post-it note
- 3) Write a positive feedback comment on the graph, for example:
"I like the way you..."

Next, we will look for areas of improvement:

- 1) Look for something you feel could have been done better on the graph
- 2) Take a post-it note
- 3) Write a helpful feedback comment on the graph, for example:
"I think you could have..." or "Maybe next time..."

Graphing

After seeing how critical you can be about a graph, do you think you could have made improvements on yours? When you get your graph back I will have made SEVERAL suggestions on it. You will soon be doing another graph and, when it is assigned, I will present you with an opportunity, should you choose, to erase the mark you receive on this first graph. We will discuss this a few periods from now.



Common Suggestions on Graphs

- Make main title underline different (more dominant) than axis titles
- Do not crowd titles against edge of paper
- Use pen for titles
- Main title should have larger font than axes titles
- Title should be specific, not general (e.g., "Flow Rate of Household Fluids", not "Flow Rate Graph")
- Underline titles
- Each main word of a title should have an upper case letter
- Spelling of title should be correct
- Don't stop axis on a number, extend one square beyond last number
- Axis font should not be too big
- Include tick marks with axes beside all numbers
- Do not need to write all numbers along axes, write a number on every second line
- Be sure to list units (correct units) with axes



Common Suggestions on Graphs

- Spacing on axis needs to be uniform
- Do not extend underlines too far from words
- Legends should have a box around them
- Leave space between the information in an information box and the outline
- Only use one colour for bars when you only have one set of data
- Keep spacing consistent
- Try to fill large empty spaces with something
- Use the space you have on the page
- Need to use graph paper
- Pencil crayon or pen should be used for lines, not highlighter or marker
- In a legend, represent the data appropriately, i.e., do not draw a box in blue to represent a blue line on a line graph, draw a blue line to represent a blue line
- Use a ruler for ALL straight lines