

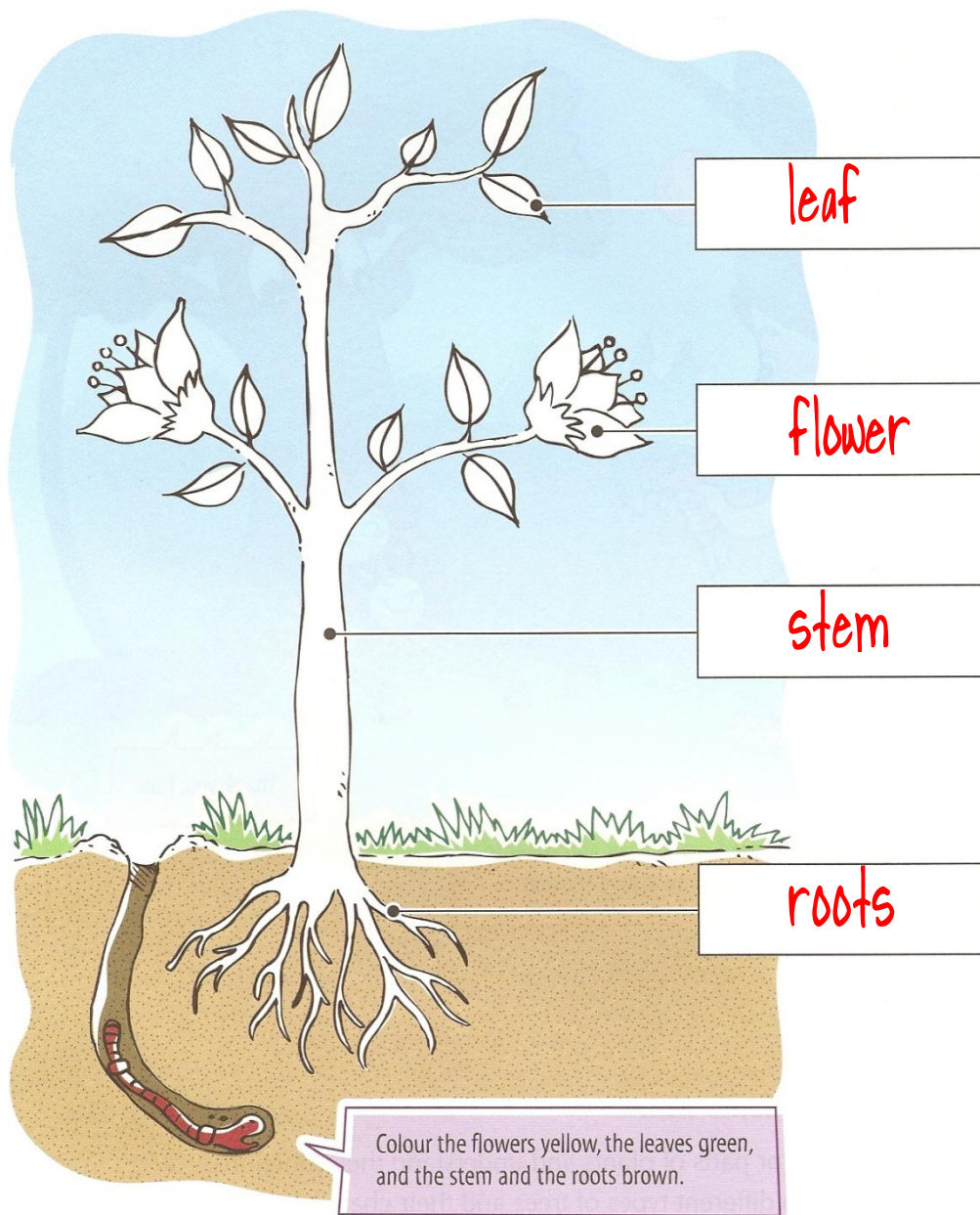
Name: _____

Date: _____

Plant Parts

Plants come in many shapes, and sizes, but they all have parts that are alike. You may not be able to see all the parts on a plant, but each part has a special job to do, and all of the parts work together to keep the plant healthy.

Label the plant parts on the picture below. Then, on the back of this paper use the information sheet to summarize the job of each of the plant parts listed.



<p style="text-align: center;">Flowers</p> <p>Flowers develop seeds to reproduce the plant.</p>	<p style="text-align: center;">Stem</p> <p>Stems carry the water from the roots, up to the rest of the plant. They also carry the nutrients to the leaves, from the soil. Stems hold the plant up.</p>
<p style="text-align: center;">Leaves</p> <p>Leaves make food for the plant by using water from the soil, carbon dioxide from the air and energy from the sunlight.</p>	<p style="text-align: center;">Bulb</p> <p>Bulbs help plants survive through winter. They store food for the plant to produce a stem and leaves with the cold weather is gone. Not all plants have bulbs.</p>
<p style="text-align: center;">Roots</p> <p>Roots collect water and transport it to the stem. Roots hold the plant in place.</p>	<p style="text-align: center;">Fruit</p> <p>Fruit is the place where the plants hold their seeds.</p>